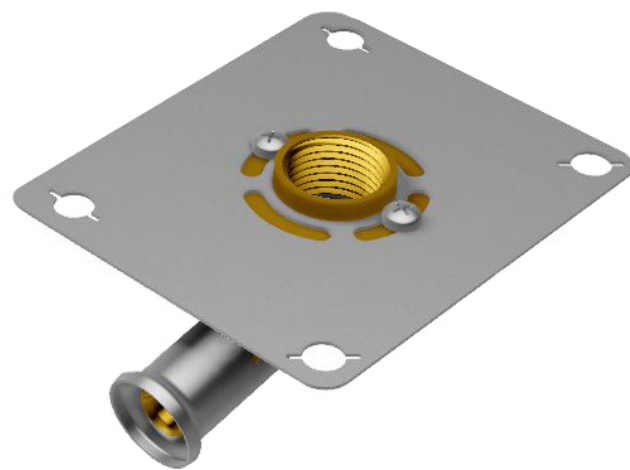


INSTRUCTIONS

HENCOFIX

RACCORD À SERTIR
DIAMÈTRE 20 MM

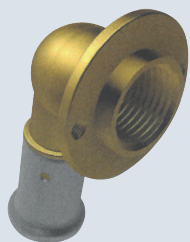


RÉFÉRENCE
R08M20SH

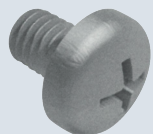
CONTENU



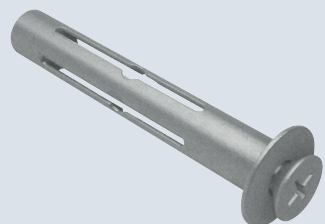
X1



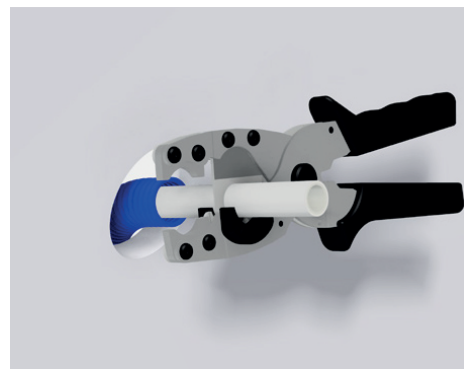
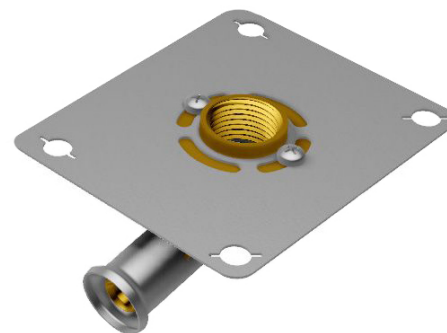
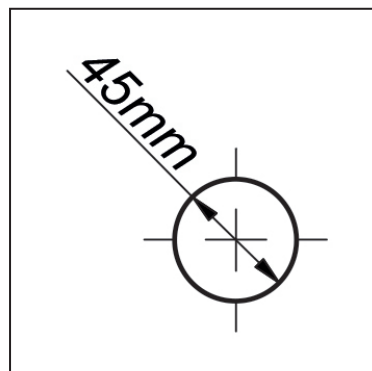
X1



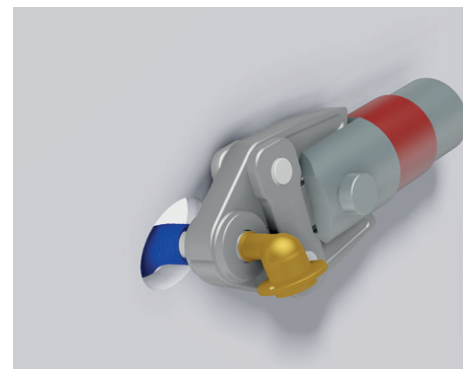
X2



X4



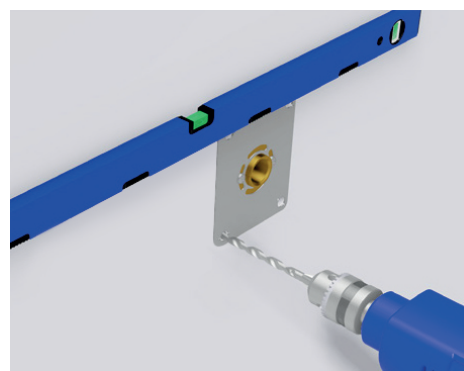
1/ Couper et calibrer les tubes.



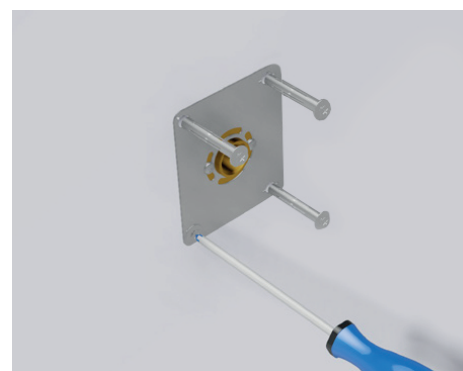
2/ Sertir.



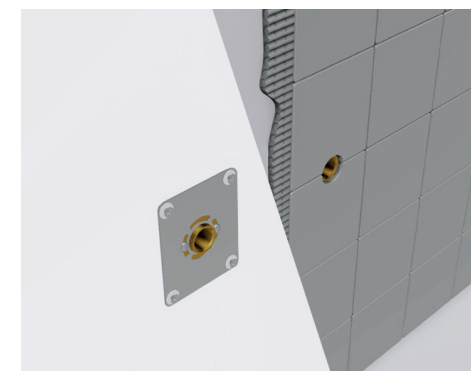
3/ Fixer les coudes dans la platine.



4/ Percer des trous.



5/ Fixer la platine au mur.



6/ Prêt pour la finition.

